

"SPALDING M.U.P.D."

A PORTION OF THE WEST ONE-HALF (W 1/2) OF THE WEST ONE-HALF (W 1/2) OF THE SOUTH EAST ONE-QUARTER (SE 1/4) OF SECTION 10, TOWNSHIP 46 SOUTH, RANGE 42 EAST, PALM BEACH COUNTY, FLORIDA
SHEET 3 OF 3, MAY, 2001

"SPALDING M.U.P.D."
PETITION NUMBER: 99-092

AREA TABULATION TABLE		
TRACT #	ACRES	SQUARE FEET
TOTAL	25.8165	1,124,566.89
A	0.0262	1,140.00
B	0.1202	5,237.83
C	0.0605	2,634.00
E	0.3007	13,099.12
F	23.1253	1,007,340.00
G	0.9238	40,240.75
H	1.2598	54,875.19

STATE OF FLORIDA }
COUNTY OF PALM BEACH } SS

THIS PLAT WAS FILED FOR RECORD AT _____ DAY OF _____ AD, 2001 AND DULY RECORDED IN PLAT BOOK _____ ON PAGES _____ THRU _____

DOROTHY H. WILKEN, CLERK
CIRCUIT COURT

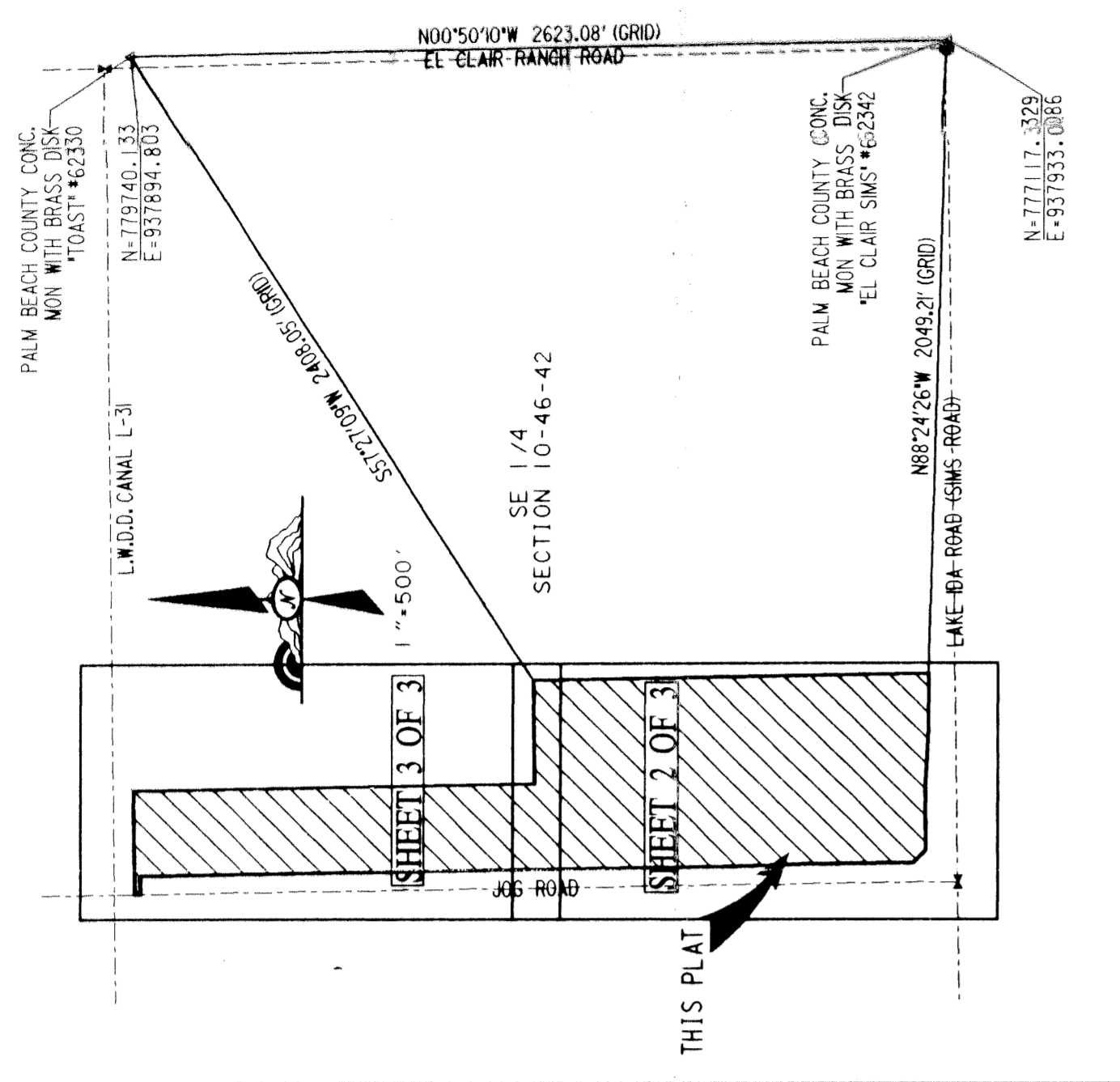
BY: _____ DC

NOTICE:

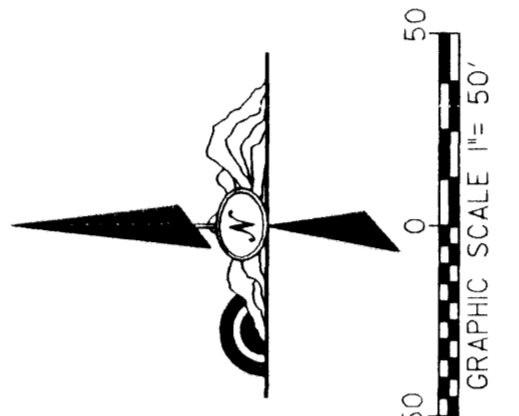
THIS PLAT, AS RECORDED IN ITS GRAPHIC FORM, IS THE OFFICIAL DEPICTION OF THE SUBDIVIDED LANDS DESCRIBED HEREIN AND IN NO CIRCUMSTANCES BE SUPPLANTED IN AUTHORITY BY ANY GRAPHIC OR DIGITAL FORM OF THE PLAT. THERE MAY BE ADDITIONAL RESTRICTIONS THAT ARE NOT RECORDED ON THIS PLAT THAT MAY BE FOUND IN THE PUBLIC RECORDS OF THIS COUNTY.

LEGEND:

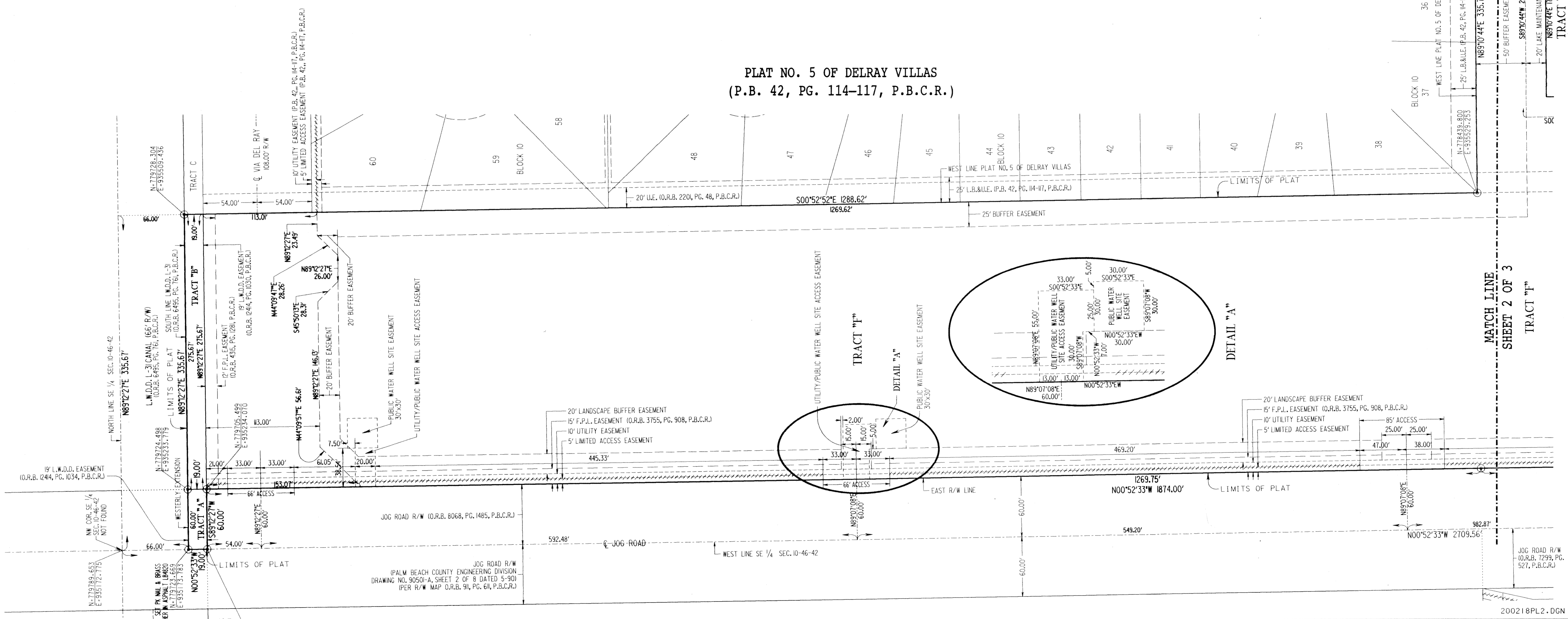
- ACM - ATLANTIC CARIBBEAN MAPPING, INC.
- CL - CENTERLINE
- CONC. - CONCRETE
- COR. - CORNER
- DRAIN. - DRAINAGE
- EASE. - EASEMENT
- FND. - FOUND
- I.R. - IRON ROD
- LB. - LICENSE BUSINESS
- L.W.D.D. - LAKE WORTH DRAINAGE DISTRICT
- O.R.B. - OFFICIAL RECORD BOOK
- O/S - OFFSET
- P.B.C.R. - PALM BEACH COUNTY RECORDS
- P.B. - PLAT BOOK
- P.C.P. - PERMANENT CONTROL POINT
- PG. - PAGE
- P.O.B. - POINT OF BEGINNING
- P.O.C. - POINT OF COMMENCEMENT
- P.R.M. - PERMANENT REFERENCE MONUMENT
- P.S.M. - PROFESSIONAL SURVEYOR AND MAPPER
- RGE. - RANGE
- R/W - RIGHT OF WAY
- SEC. - SECTION
- TWP. - TOWNSHIP
- WITH - WITH
- LIMITED ACCESS EASEMENT - LIMITED ACCESS EASEMENT
- SET P.R.M. ACM LB4820 - SET P.R.M. ACM LB4820 UNLESS OTHERWISE NOTED
- SET P.C.P. LB4820 UNLESS OTHERWISE NOTED



STATE PLANE COORDINATE TIE-IN DETAIL



PLAT NO. 5 OF DELRAY VILLAS (P.B. 42, PG. 114-117, P.B.C.R.)



UNPLATTED

LB4820

PROFESSIONAL SURVEYORS AND MAPPERS
LB4820

ATLANTIC - CARIBBEAN MAPPING, INC.
3070 JOG ROAD - GREENACRES, FLORIDA 33467
(561) 964-7884; FAX (561) 964-1963; WWW.ACMINC.COM

Spalding M.U.P.D.
 9/17/01
 800A
 33484
 330
 330
 330